



Fourteen

MAIN STREET
RESIDENCES

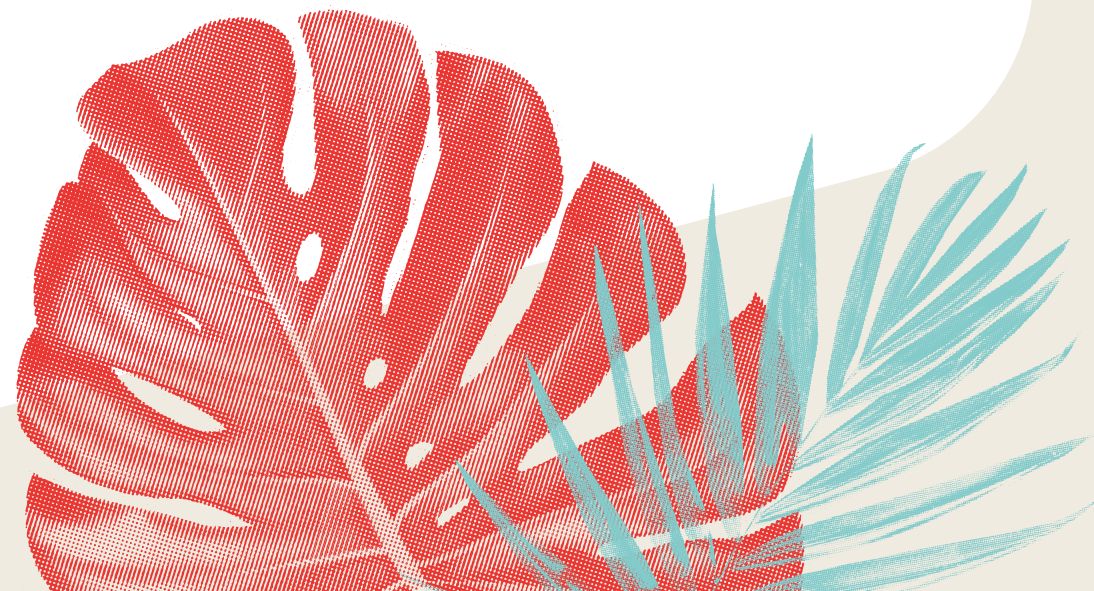
TABLE OF CONTENTS

Introduction	3
Location	8
Fourteen	13
Residences	20
Floor plans	24

DRAFT



INTRODUCTION





WHERE MODERN LIFE MEETS VIBRANT CITY LIVING

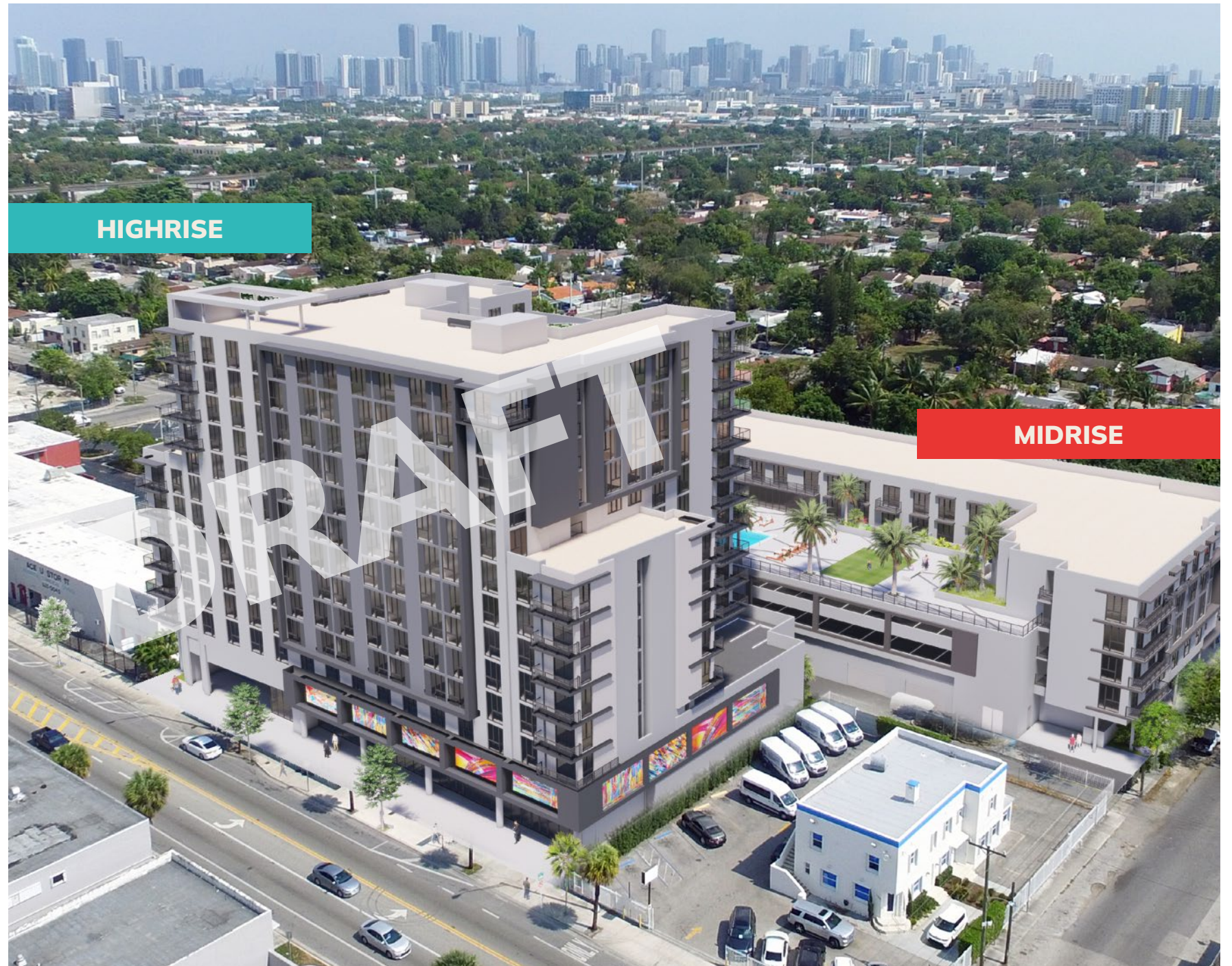
Welcome to Fourteen Main Street Residences, a revolutionary addition to the Allapattah landscape. Located on Miami's historic 36th Street, the city's original Main Street, where elevated living reaches new heights. Beautifully designed one- and two-bedroom apartments with designer finishes and a host of impressive amenities. Fourteen Main Street Residences offers the perfect combination of modernity and comfort, tailored for the cosmopolitan urbanite.

Artist's conceptual rendering.

EXPLORE FOURTEEN MAIN STREET RESIDENCES

HIGHRISE
14 story building
STUDIO
ONE-BEDROOM
TWO-BEDROOM

MIDRISE
5 story building
WALK-UP
TWO-BEDROOM





HIGHRISE

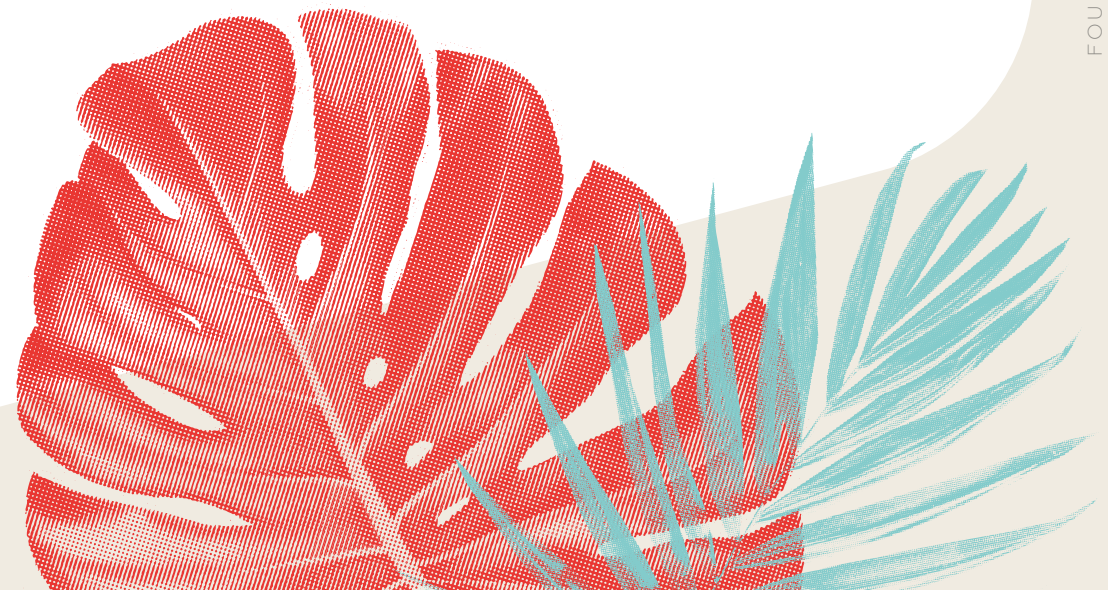
Our Highrise building stands as a beacon of sophistication and comfort rising to 14 stories with its entrance on 36th Street. With sleek architectural design, these apartments offer a lifestyle like no other. Step into a world of relaxation and convenience as you explore our meticulously designed homes. From spacious living areas with floor-to-ceiling windows, to modern open concept kitchens and elegant bathrooms. Every detail has been carefully thought to enhance your living experience.

MIDRISE

Nestled behind the Highrise, and off of Main Street, Midrise offers a perfect blend of ease and charm. Each apartment in our Midrise building is thoughtfully designed to maximize space and natural light, creating a warm and welcoming ambiance. Experience the charm of urban living with a touch of tranquility. The apartments have spacious and luminous living areas with open concept kitchens and modern bathrooms. In addition to the spacious two-bedroom residences, The Midrise offers walk-up homes with direct access from the street giving you the feel of a house with the lifestyle and community amenities of a building.



LOCATION



IMMERSE YOURSELF IN THE VIBRANT SPIRIT OF ALLAPATTAH

Discover Allapattah, a historic gem nestled in the heart of Miami. Positioned strategically, this vibrant district offers an unparalleled gateway to the city's dynamic lifestyle. Here, you'll find a seamless fusion of work, play, and luxurious living.

Immerse yourself in Miami's pulsating energy living at the epicenter of urban excitement. From amazing culinary adventures to enriching cultural experiences, everything you desire is just moments away. Embrace the convenience of being close to both professional opportunities and leisure pursuits, ensuring a life filled with effortless enjoyment.

Experience the epitome of urban living in Allapattah. Elevate your lifestyle as you indulge in the finest offerings the city has to offer, right at your fingertips. Allapattah invites you to live, work, and play with unparalleled ease in this upcoming neighborhood.



EMBRACING HISTORY

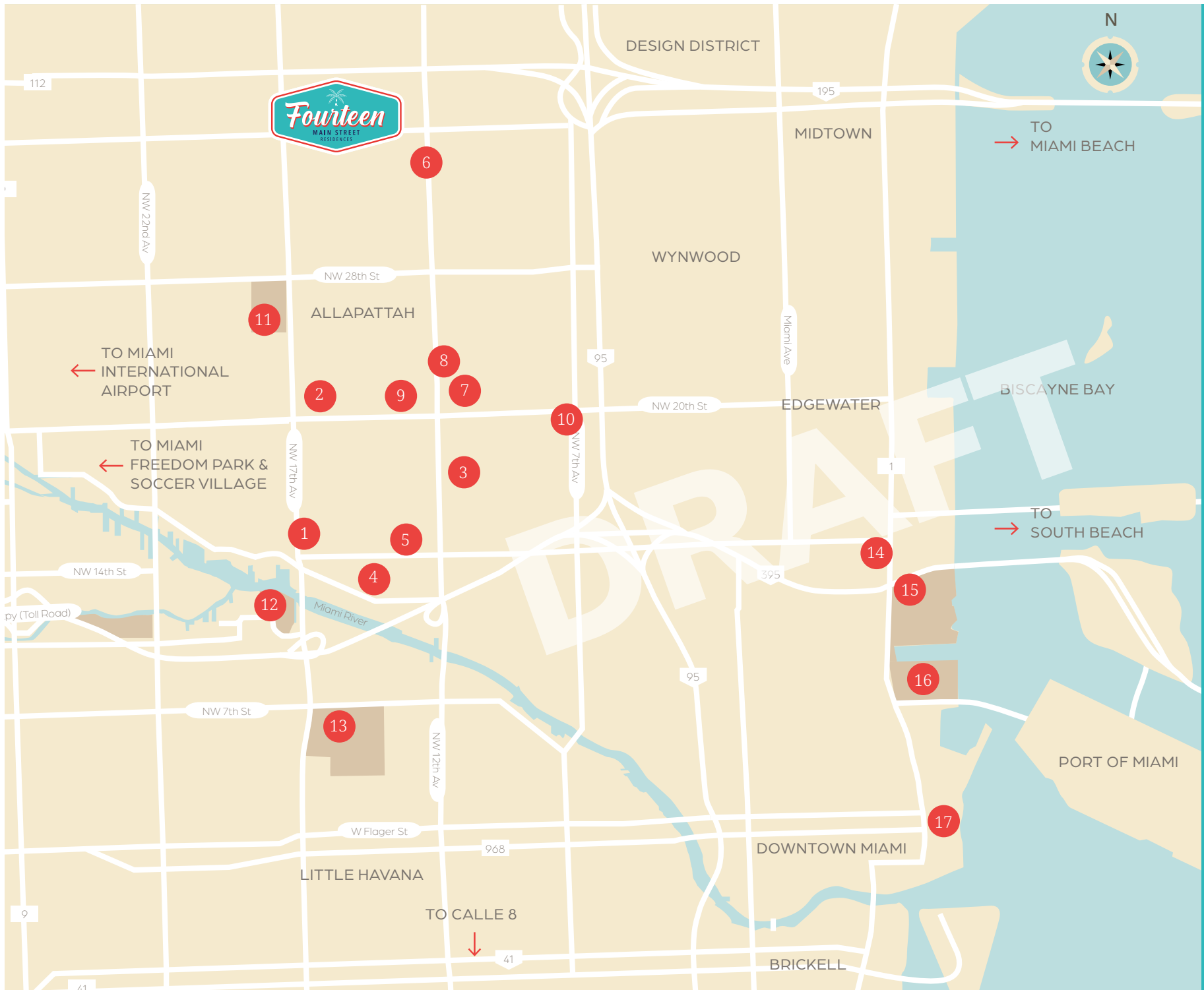
REVIVING MIAMI'S ORIGINAL NEIGHBORHOOD



Sitting on Miami's historic 36th Street, the city's original Main Street, Fourteen redefines urban living with its unparalleled convenience and immersion in cultural vibrancy. This exceptional address envelops you in an atmosphere brimming with energy and authenticity, while placing you at the nexus that seamlessly connects you to Miami's multifaceted cosmopolitan allure.

Just steps away from the Metrorail station, and with effortless access to the city's major highways, Fourteen emerges as the ultimate intersection where elevated comfort and modern convenience converge. Here, the contemporary urbanite can truly thrive, with every aspect of Miami's dynamic lifestyle within easy reach.





POINTS OF INTEREST

1. No. 17 Allapattah Residences
2. The Julia Residences
3. Jackson Memorial Hospital
4. Miami VA Medical Center
5. University of Miami Health System
6. Allapattah Metrorail Station
7. Rubell Museum & Leku Restaurant
8. Superblue Museum
9. National Produce Miami (Fruit Packing)
10. University of Miami Science and Technology Park
11. Juan Pablo Duarte Park
12. Sewell Park
13. Marlins Stadium
14. Adrienne Arsht Center
15. Frost - Museum Of Science
16. Kaseya Center
17. Bayfront Park



10 MINS FROM
FREEDOM PARK



5 MINS FROM
U-HEALTH DISTRICT



5 MIN. FROM
DESIGN DISTRICT



7 MIN. FROM
WYNWOOD

Fourteen
MAIN STREET
RESIDENCES



10 MIN. FROM
MIAMI INTERNATIONAL
AIRPORT



15 MIN. FROM
CALLE 8



15 MIN. FROM
DOWNTOWN MIAMI



15 MIN. FROM
BRICKELL

FOURTEEN MAIN STREET

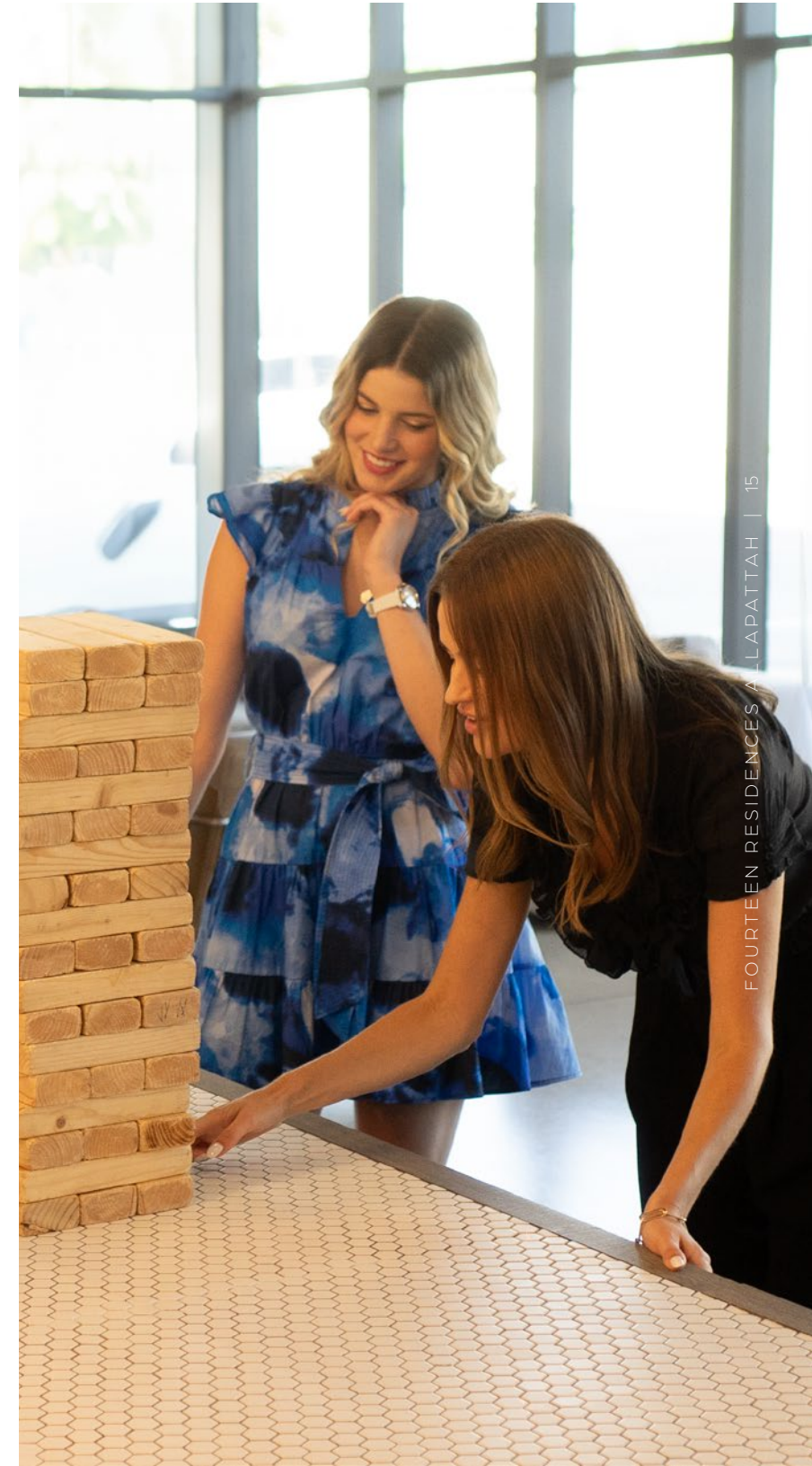
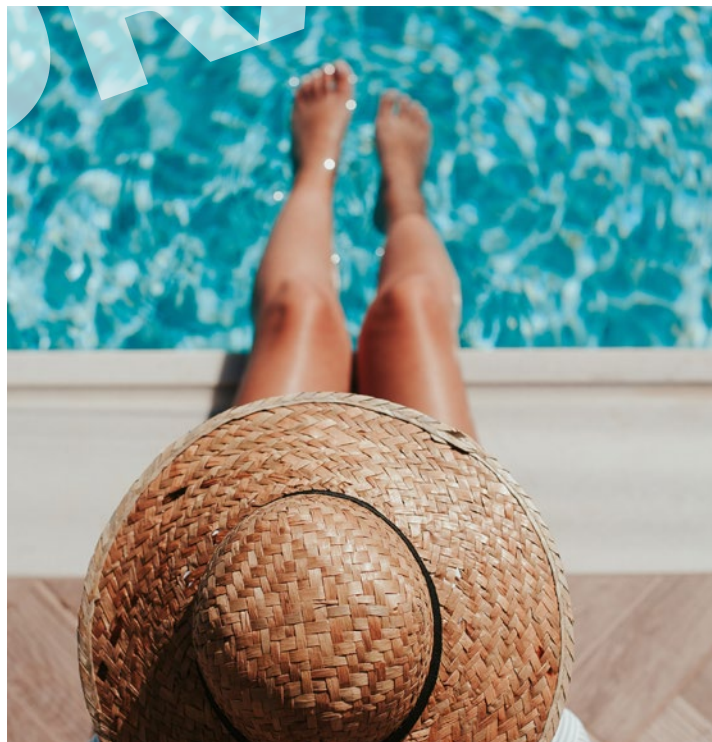




AMENITIES THAT ELEVATE YOUR COSMOPOLITAN EXPERIENCE

Fourteen Main Street Residences offers a sophisticated living experience with a wide range of amenities to enhance residents' lifestyles. The highlight is its expansive rooftop deck, featuring a resort-style pool, relaxing cabanas, a clubroom for social gatherings, and a state-of-the-art indoor and outdoor fitness center for staying active. The fitness center also features a virtual fitness studio, allowing residents to participate in group classes or personalized workouts. Additionally, the property provides co-working spaces, perfect for professionals working remotely or conducting meetings. With its comprehensive range of amenities, Fourteen provides the perfect blend of luxury, convenience, and community for its residents.

These amenities create a vibrant and welcoming community where residents can enjoy both leisure and productivity in a modern urban setting.





DRAFT

FOURTEEN RESIDENCES AT LAVA

Artist's conceptual rendering

EVERY SPACE IS AN INVITATION TO **EMBRACE THE JOY OF LIVING**

BUILDING FEATURES

Experience the art of living at Fourteen, where every space is designed to inspire joy and enhance your lifestyle. Discover our meticulously crafted common areas, featuring amenities that foster relaxation, socialization, and a love for urban living.





DRAFT



GROUND FLOOR

- Multipurpose lobby lounge with coworking spaces
- Curated original artwork
- Complimentary WIFI in all common areas
- Smart access control
- Virtual concierge smart package delivery room
- On-site parking
- EV charging stations
- Bike storage
- On-site professional management



PET FRIENDLY

- Pet spa with grooming station



FITNESS CENTER

- Contemporary indoor-outdoor fitness centers
- Virtual fitness studio
- Yoga & meditation space
- Cutting-edge exercise equipment
- Cardio training area
- Strength training area



ROOFTOP

- 10,000 sq.ft. amenity deck with sunset vistas
- Resort-style pool with shaded cabanas
- Clubhouse with catering kitchen
- BBQ grill and outdoor dining area
- Children's play area
- Shaded garden

RESIDENCES



EXPLORE FOURTEEN MAIN STREET'S RESIDENCES

Each apartment is a testament to modern luxury and sophistication. Our residences boast meticulously designed floor plans that maximize space and natural light, creating an atmosphere of openness and freedom. With designer finishes and fixtures throughout, every detail has been carefully curated to ensure both style and functionality. Whether you're seeking a cozy studio or a spacious one or two-bedroom apartment, our project offers a variety of floor plans to suit your lifestyle.





TYPES OF RESIDENCES

With a focus on both aesthetics and functionality, every apartment is a testament to finding the best ways to enhance the residents' experience. Both buildings provide different options ranging from walk-ups, studios, one- and two- bedroom residences.

STUDIOS

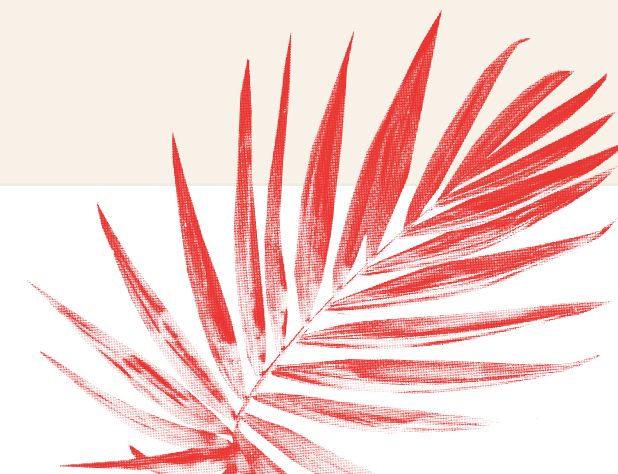
415 Sq.Ft. to 450 Sq.Ft.

1 BED / 1 BATH

590 Sq.Ft. to 670 Sq.Ft.

2 BED / 2 BATH

830 Sq.Ft. to 975 Sq.Ft.



RESIDENCE FEATURES



Artist's conceptual rendering

- Professionally designed interiors
- Up to 10' ceilings
- European style cabinetry
- Quartz countertops
- Stainless steel, energy efficient appliances
- Elegant designer fixtures
- Energy-efficient AC and heating systems
- Wood style laminated flooring
- In-unit washer and dryer
- Walk-in closets
- Floor-to-ceiling windows
- Balcony on select units
- Private terrace on select units

FLOOR PLANS

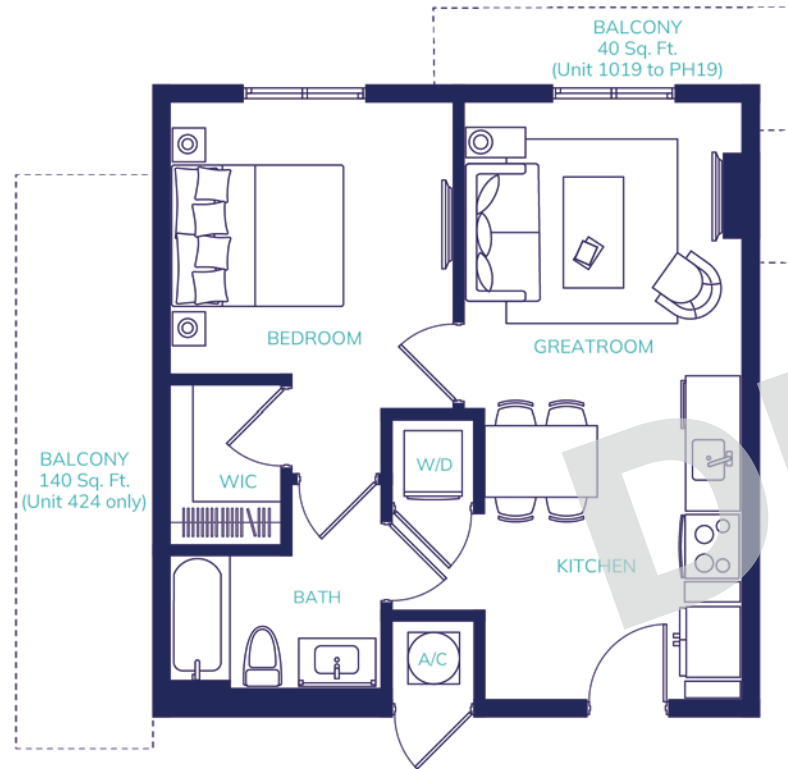
DRAFT



HIGHRISE BUILDING

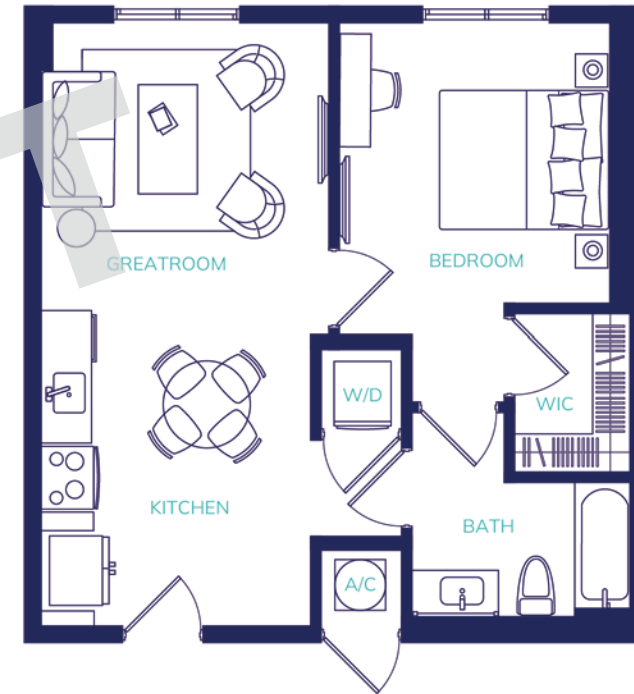
RESIDENCE TYPE A

1 Bedroom / 1 Bathroom



A1

Interior: 620 Sq. Ft
Balcony on select units



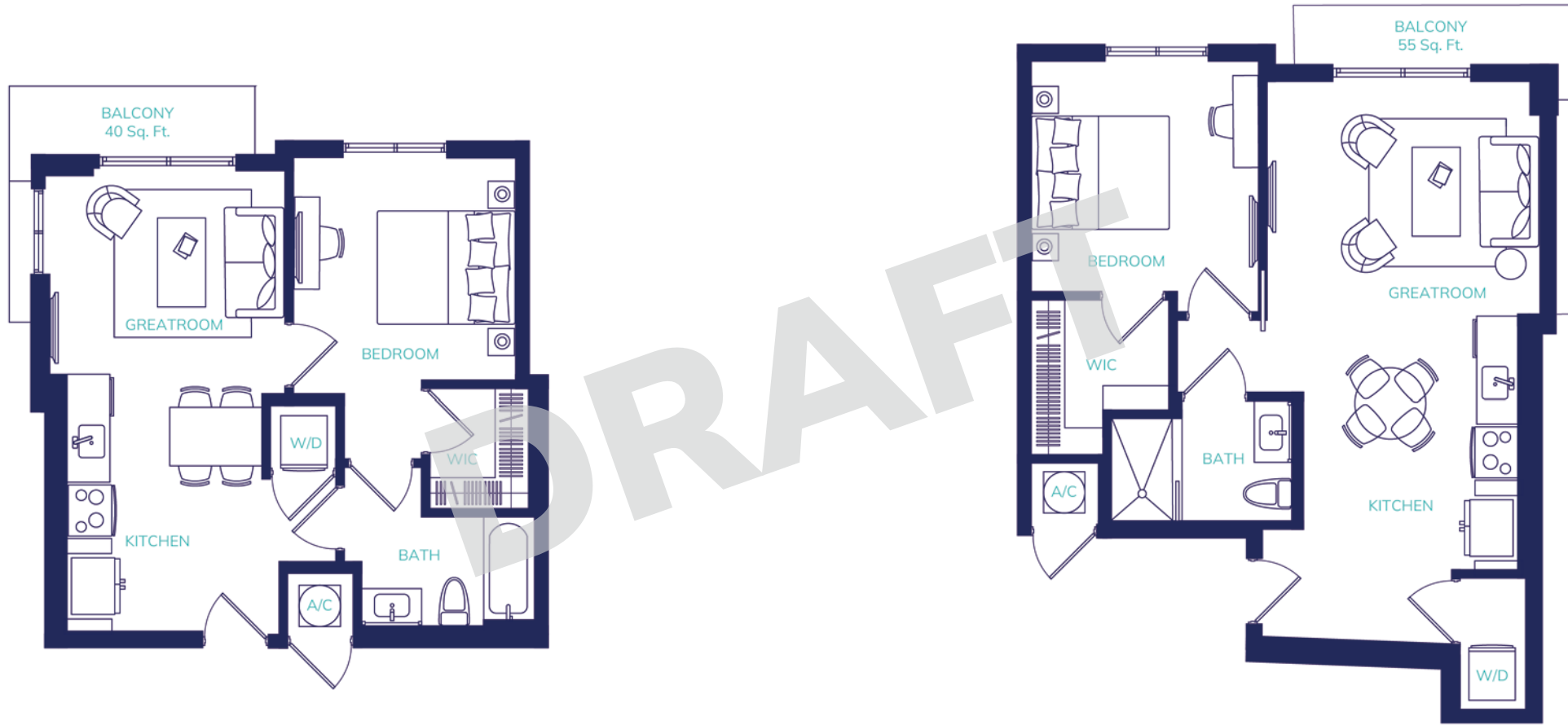
A2

Interior: 605 Sq. Ft.

HIGHRISE BUILDING

RESIDENCE TYPE A

1 Bedroom / 1 Bathroom



A3

Interior: 595 Sq. Ft.
Balcony: 40 Sq. Ft.

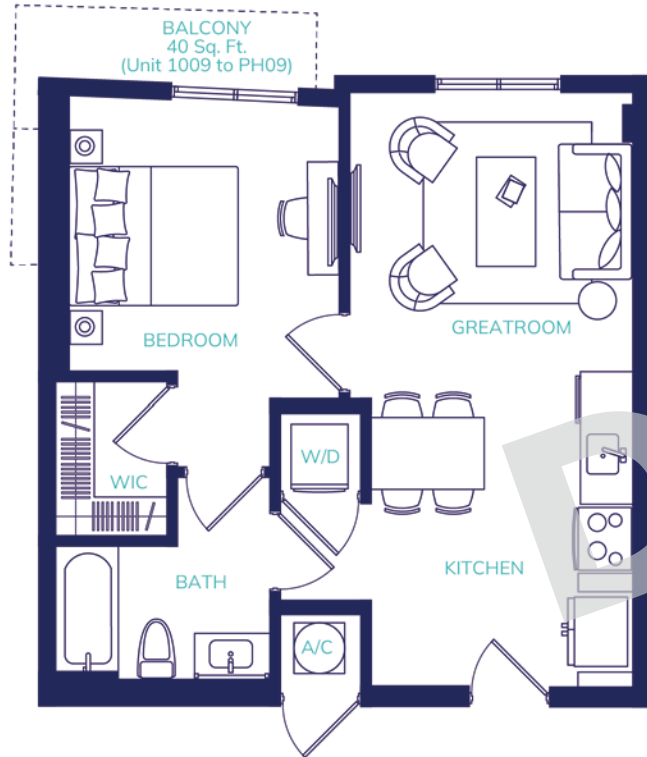
A4

Interior: 720 Sq. Ft.
Balcony: 55 Sq. Ft.

HIGHRISE BUILDING

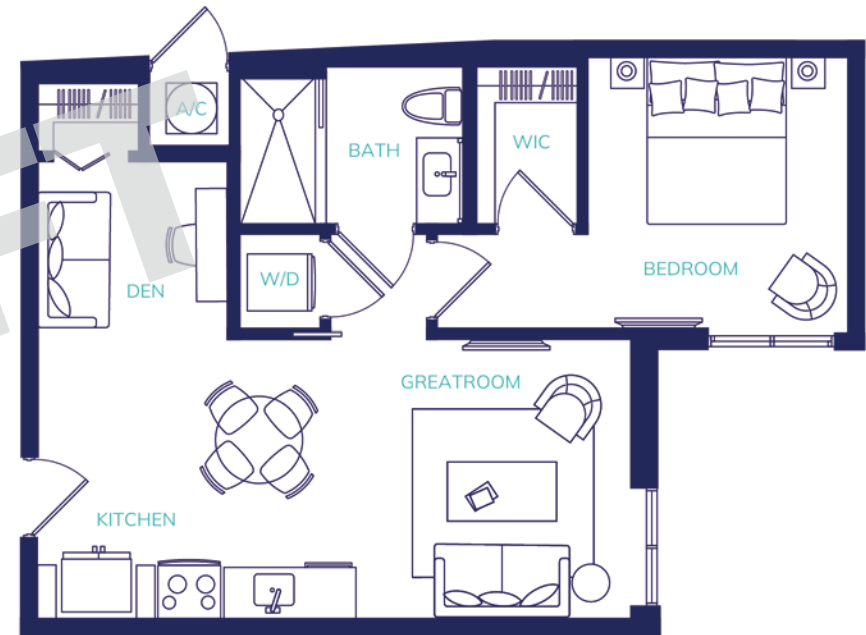
RESIDENCE TYPE A

1 Bedroom / 1 Bathroom



A5

Interior: 590 Sq. Ft.
Balcony on select units



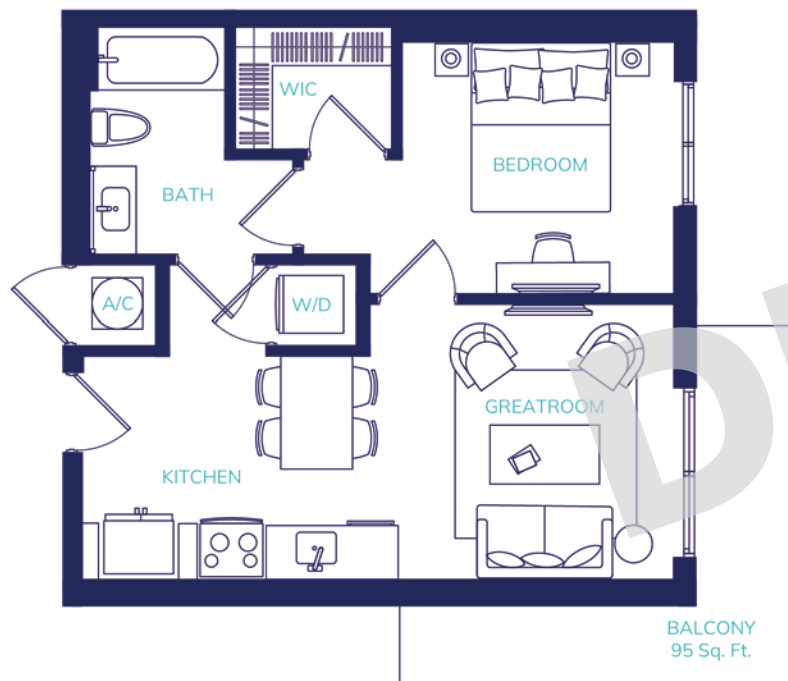
A6

Interior: 665 Sq. Ft.

HIGHRISE BUILDING

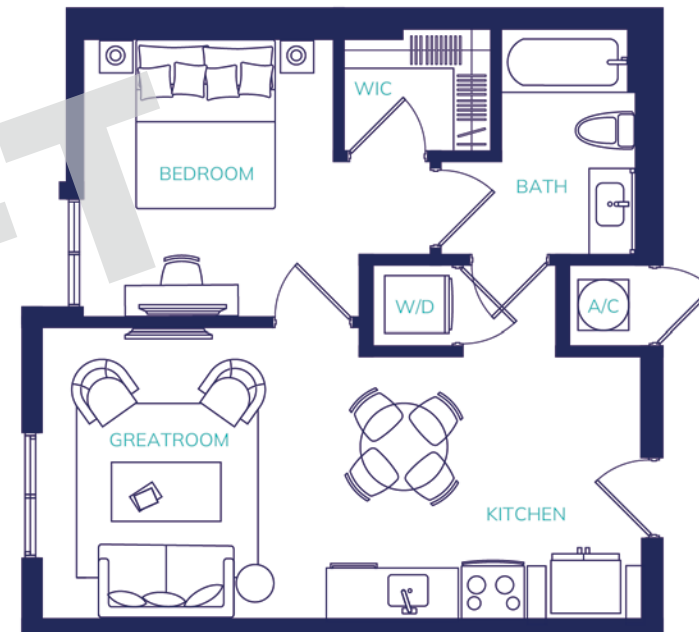
RESIDENCE TYPE A

1 Bedroom / 1 Bathroom



A7

Interior: 585 Sq. Ft.
Balcony: 95 Sq. Ft.



A8

Interior: 595 Sq. Ft.

HIGHRISE BUILDING

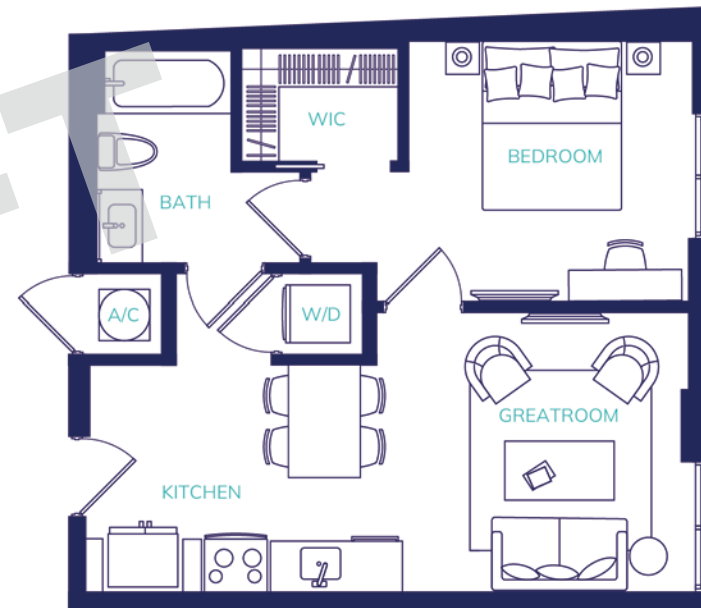
RESIDENCE TYPE A

1 Bedroom / 1 Bathroom



A9

Interior: 650 Sq. Ft.
Balcony: 50 Sq. Ft.



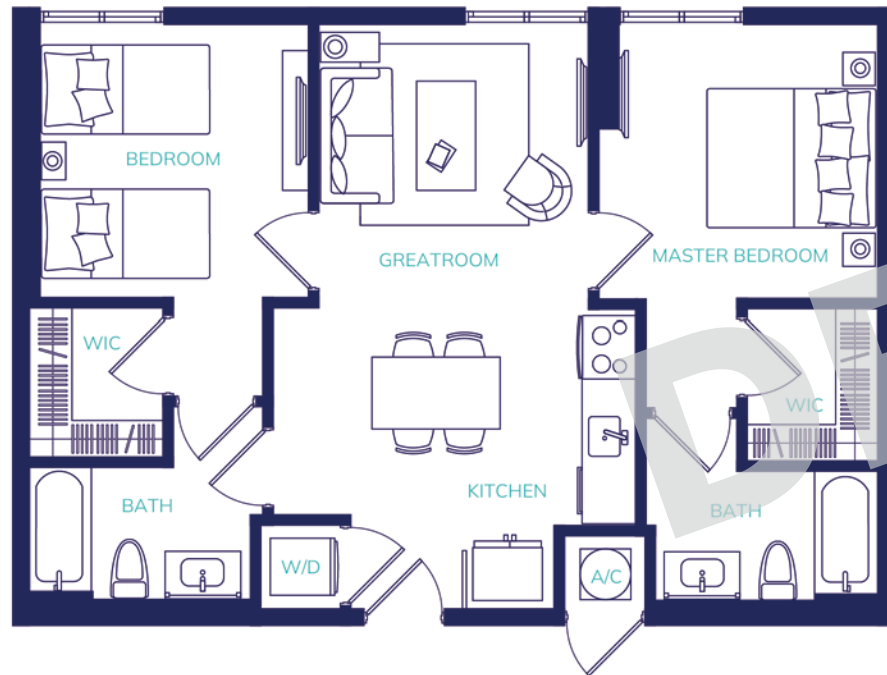
A10

Interior: 585 Sq. Ft.

HIGHRISE BUILDING

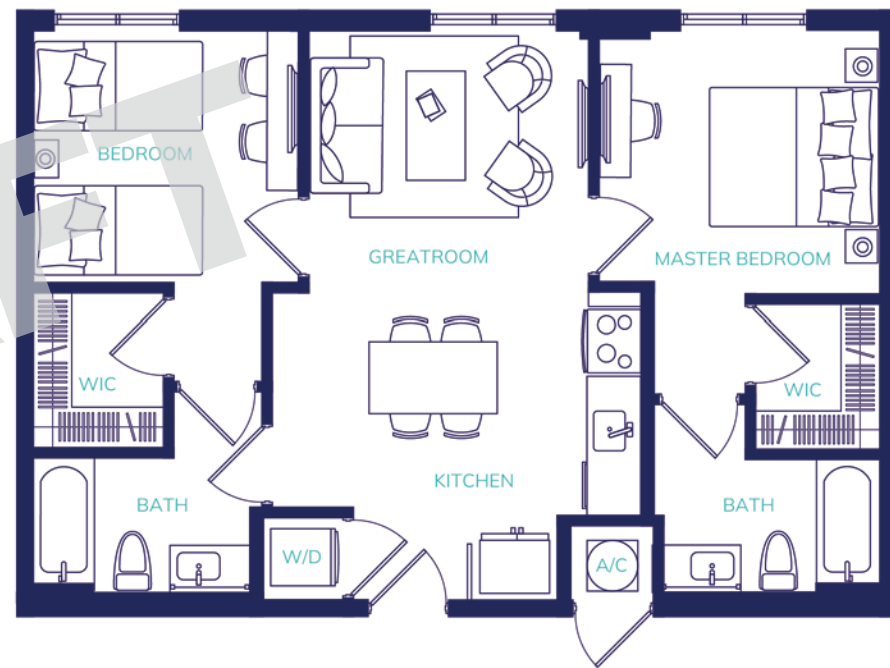
RESIDENCE TYPE B

2 Bedrooms / 2 Bathrooms



B1

Interior: 910 Sq.Ft.



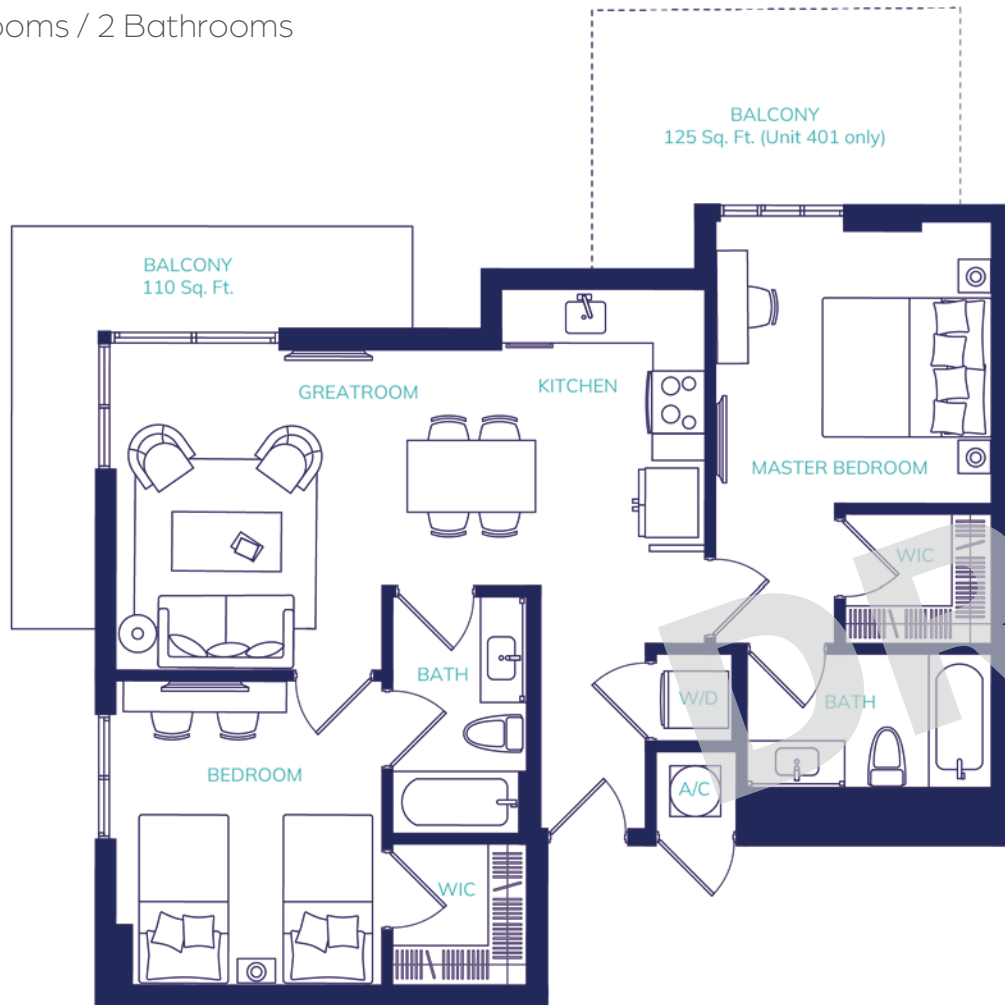
B2

Interior: 830 Sq. Ft.

HIGHRISE BUILDING

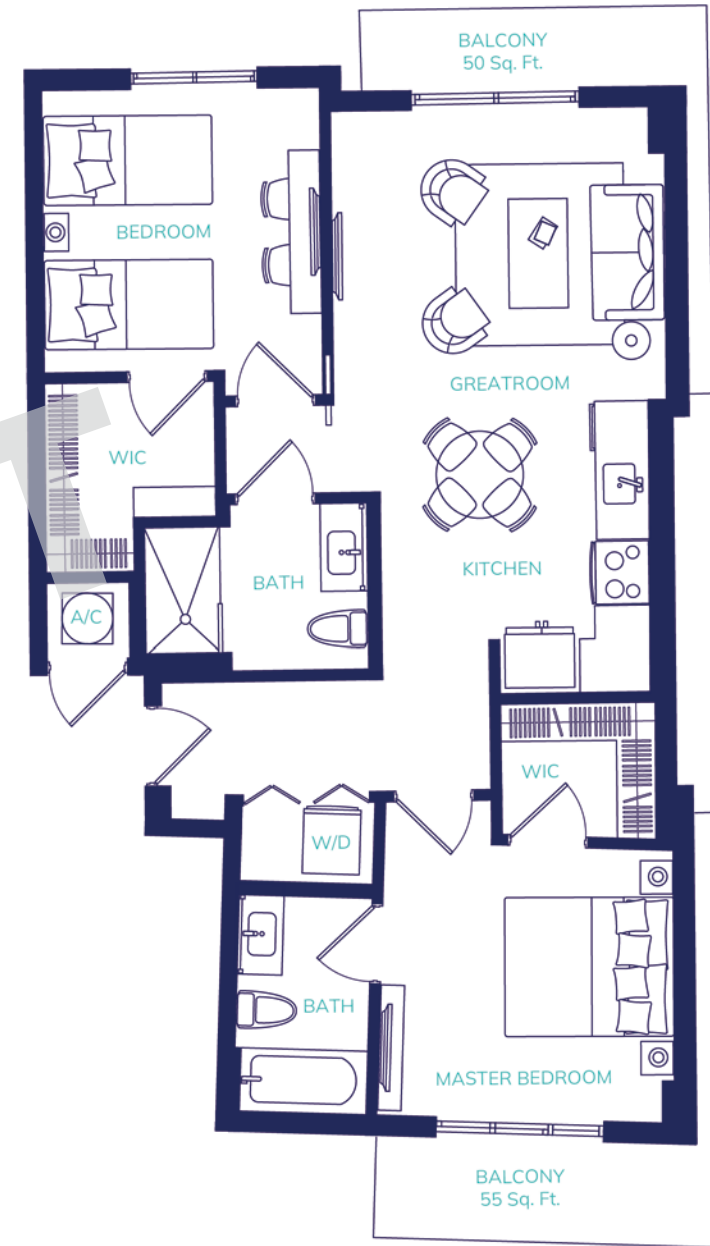
RESIDENCE TYPE B

2 Bedrooms / 2 Bathrooms



B3

Interior: 910 Sq. Ft.
Balcony: 110 Sq. Ft.



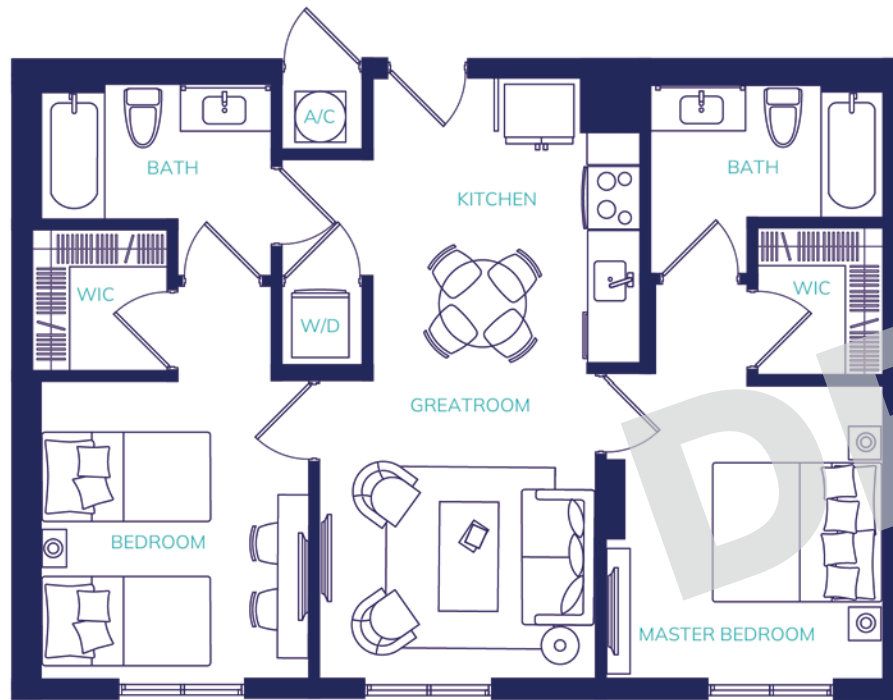
B4

Interior: 975 Sq. Ft.
Balcony: 50 Sq. Ft. & 55 Sq. Ft.

HIGHRISE BUILDING

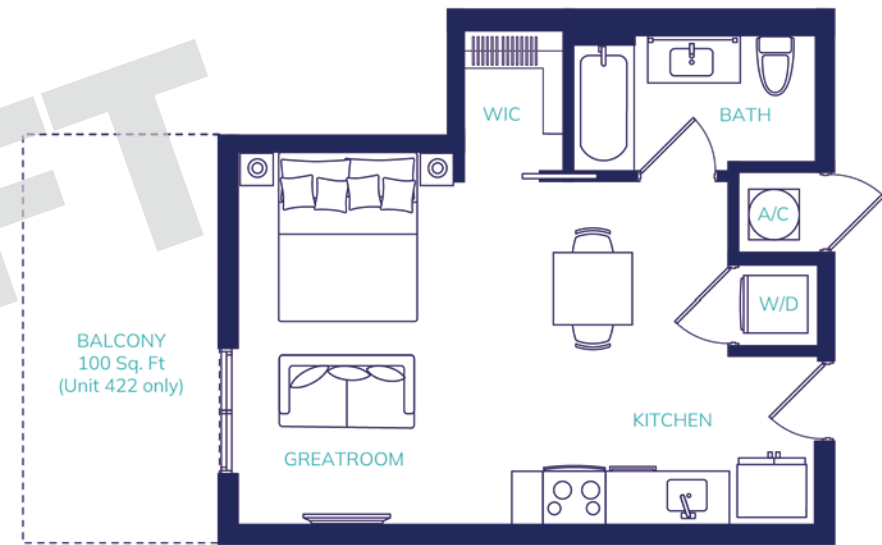
RESIDENCE TYPE A | STUDIO

2 Bedrooms / 2 Bathrooms



B5

Interior: 890 Sq. Ft.

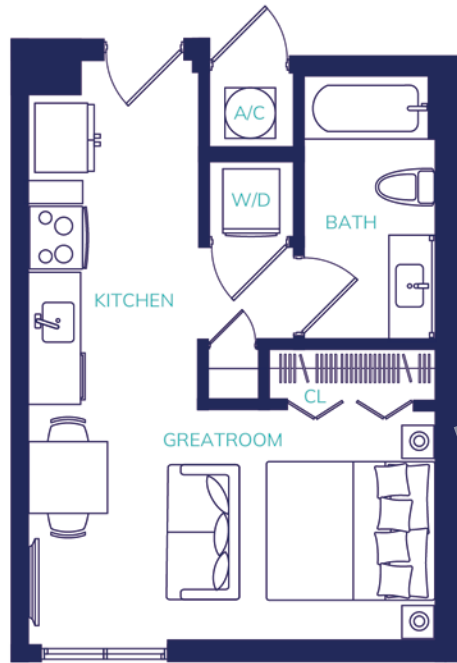


STUDIO 1

Interior: 450 Sq. Ft.

HIGHRISE BUILDING

STUDIOS



STUDIO 2

Interior: 430 Sq. Ft.



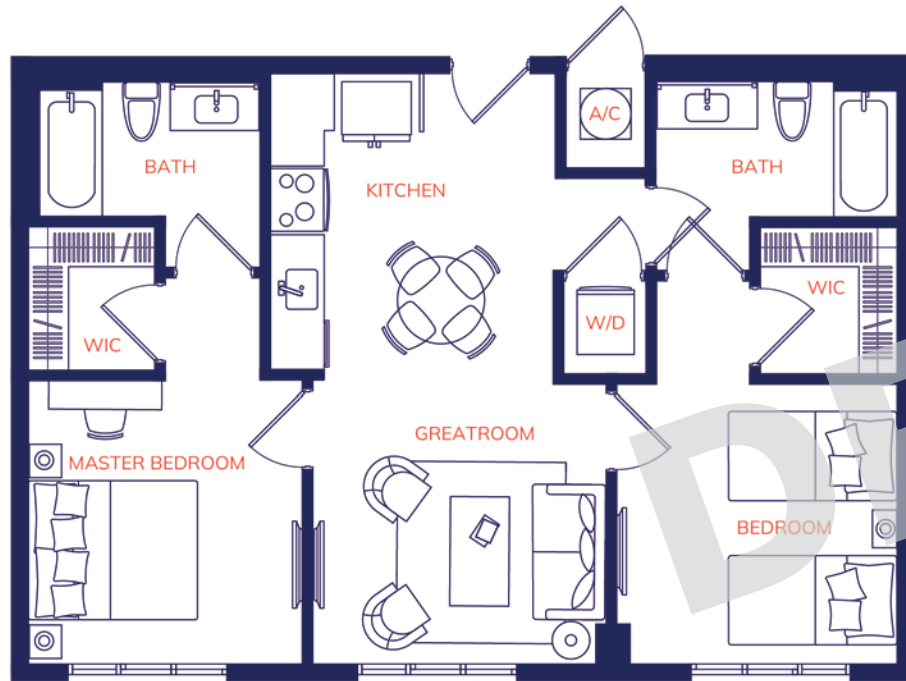
STUDIO 3

Interior: 425 Sq. Ft.

MIDRISE BUILDING

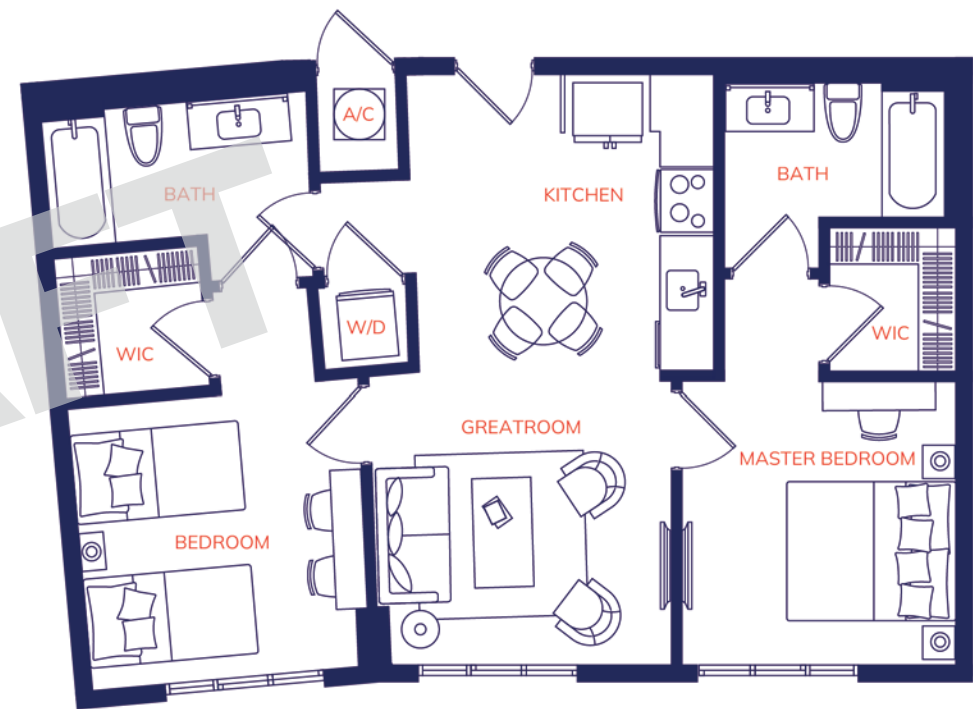
RESIDENCE TYPE B

2 Bedrooms / 2 Bathrooms



B1

Interior: 880 Sq. Ft.



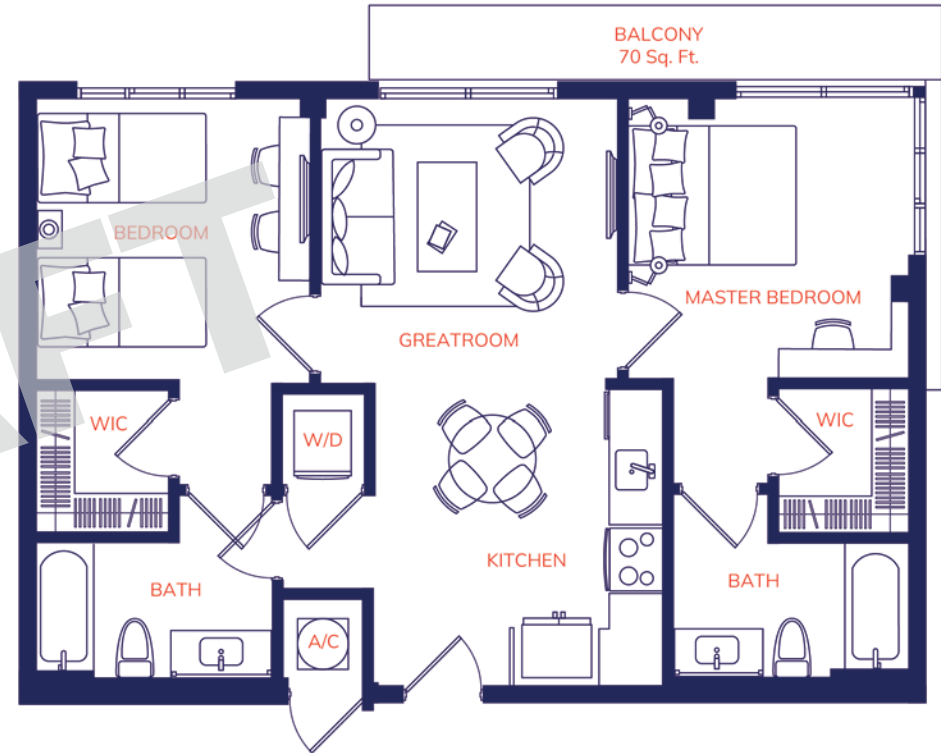
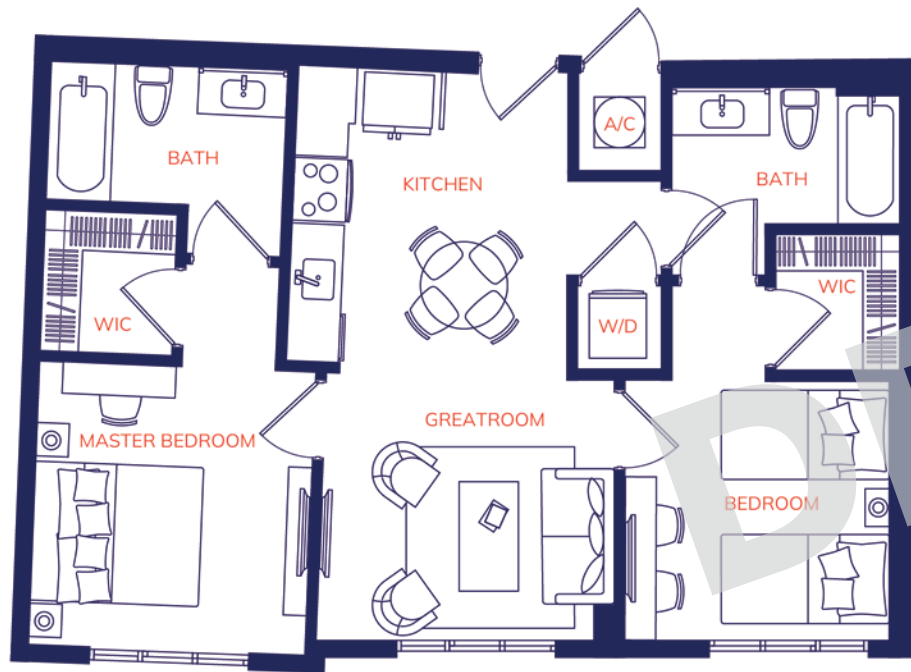
B2

Interior: 890 Sq. Ft.

MIDRISE BUILDING

RESIDENCE TYPE B

2 Bedrooms / 2 Bathrooms



B3

Interior: 840 Sq. Ft.

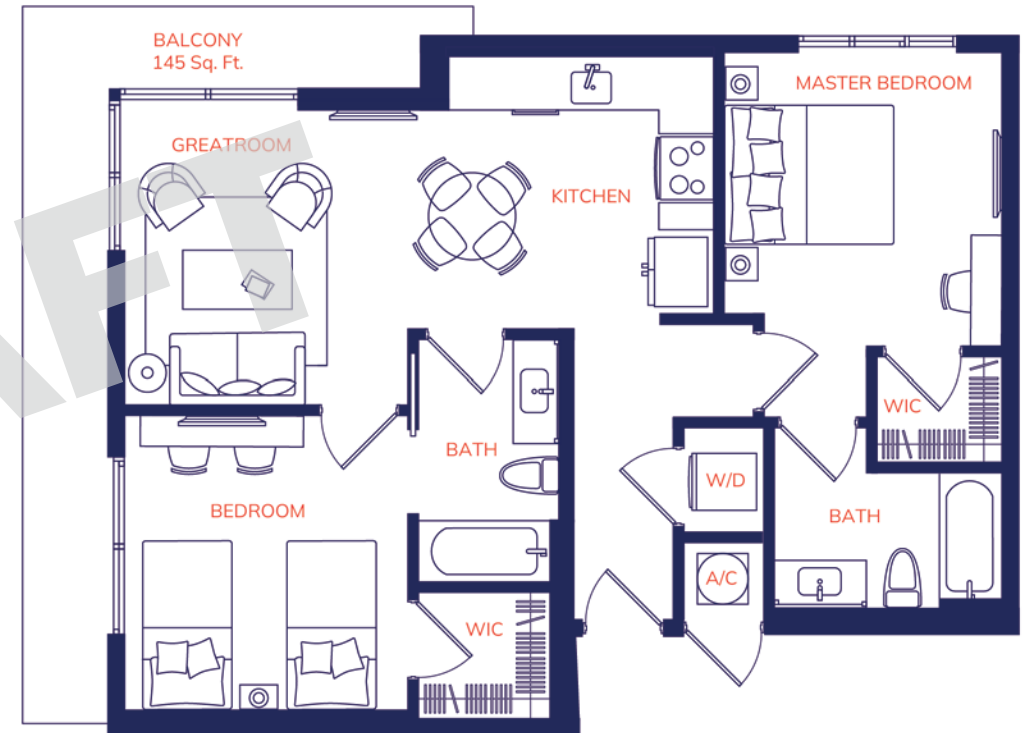
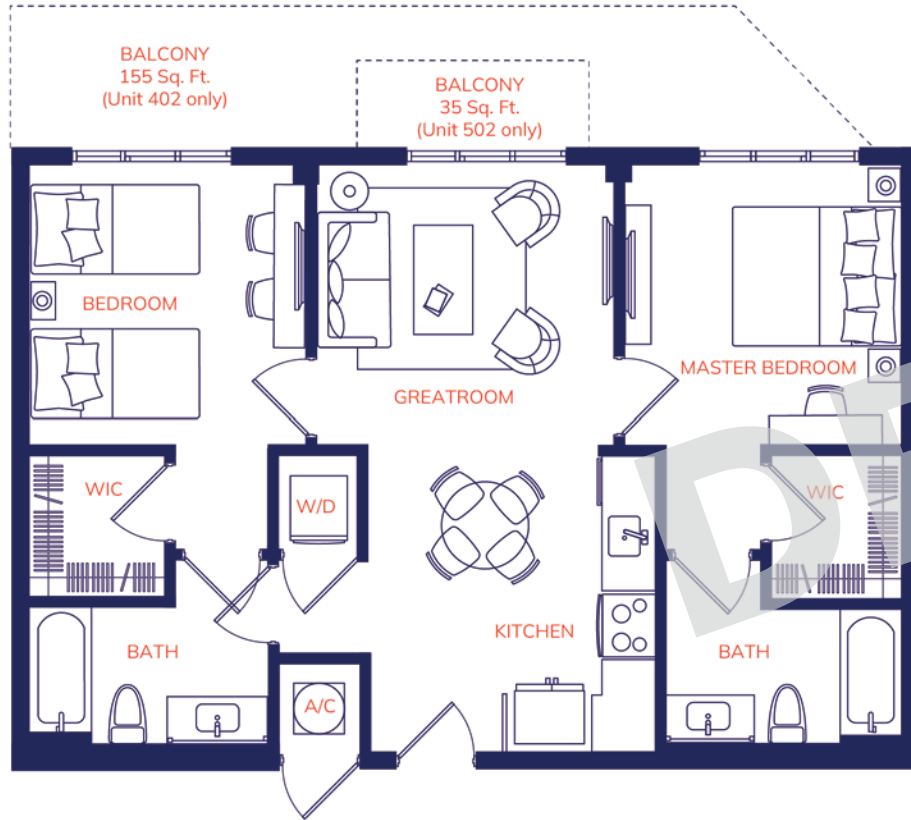
B4

Interior: 890 Sq. Ft.
Balcony: 70 Sq. Ft.

MIDRISE BUILDING

RESIDENCE TYPE B

2 Bedrooms / 2 Bathrooms



B5

Interior: 865 Sq. Ft.
Balcony on select units

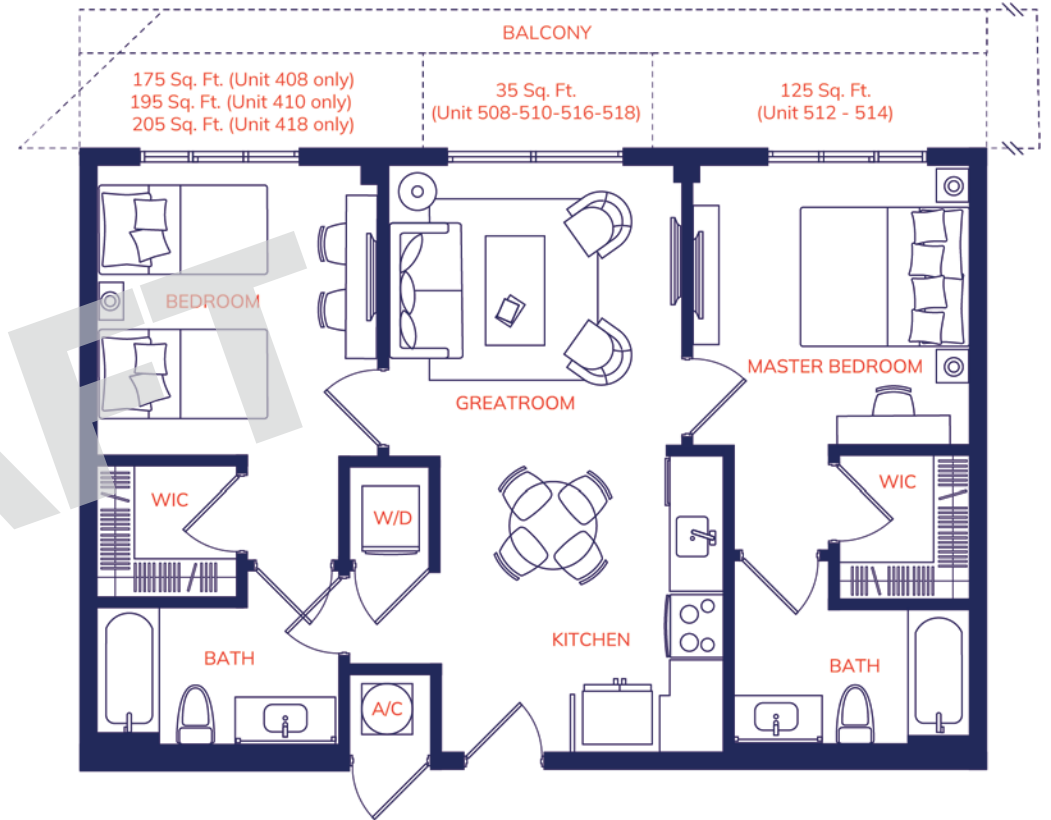
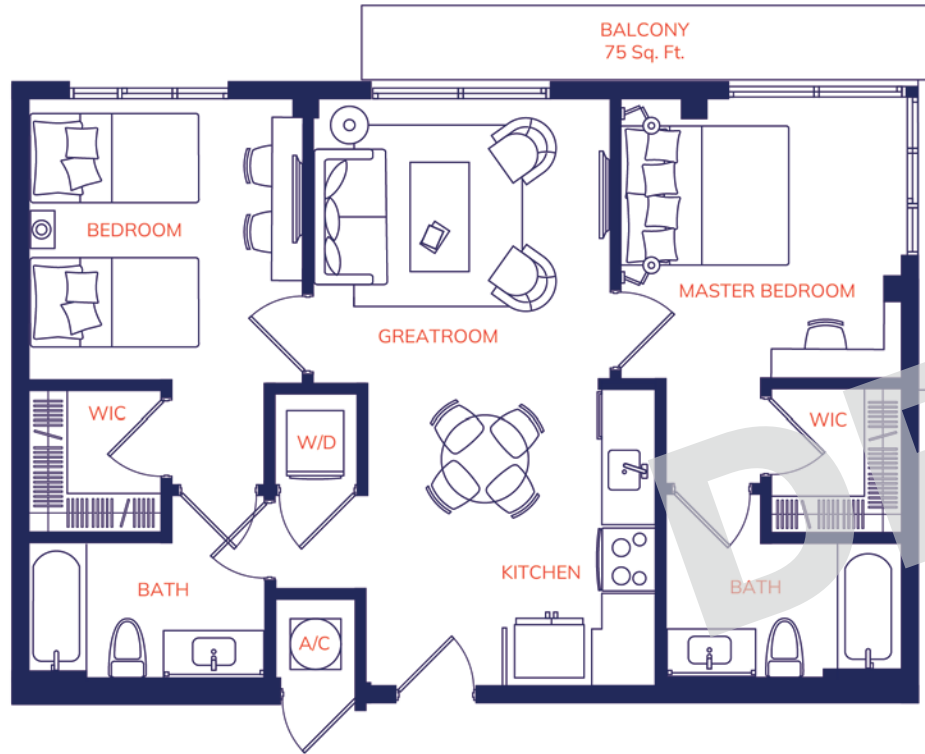
B6

Interior: 890 Sq. Ft.
Balcony: 145 Sq. Ft.

MIDRISE BUILDING

RESIDENCE TYPE B

2 Bedrooms / 2 Bathrooms



B7

Interior: 870 Sq. Ft.
Balcony: 75 Sq. Ft.

B8

Interior: 863 Sq. Ft. | 908 Sq. Ft.
Balcony: from 35 Sq. Ft. to 205 Sq. Ft.



1470 NW 36th Street, Miami, FL 33142 | T. 305.503.5814 | 14byneo.com



Apartment floor plans, renderings, and photos are an artist's conception and for illustrative purposes only. Actual square footage, layout, finishes, and property or apartment features may vary from those shown.